

# Sugarberry ANDOVER FABRICS



Winter Jewels Quilt designed by: **Janet Houts**

Quilt Size: **66" x 85½"** • Skill Level: **Confident Beginner**

# Winter Jewels Quilt

Introducing Andover Fabrics new collection: **SUGARBERRY** by Andover Fabrics

Quilt designed by Janet Houts

Quilt finishes 66" x 85½"  
32 Rose Blocks: 6" x 10½"  
31 Trellis Blocks: 6" x 10½"

*Two easy-to-piece blocks alternate in this charming winter "garden." The delicate greens and reds in the quilt can be displayed year round, not just at holiday time. The border stripe adds a touch of candy-cane whimsy.*

## Cutting Directions

**Note:** Read assembly directions before cutting patches. All measurements are cut sizes and include ¼" seam allowances. A fat ¼ is an 18" x 20"-22" cut. Borders are cut the exact lengths required plus ¼" seam allowances. WOF designates the width of fabric from selvedge to selvedge (approximately 42" wide).

### Cutting for ONE Rose Block

#### Fabric 17

Cut (4) squares 2"

#### Fabric 25

Cut (6) squares 2"  
Cut (2) squares 3½"

#### Green

Cut (2) rectangles 3½" x 5"

#### Red

Cut (4) squares 3½"

### Cutting for ONE Trellis Block

#### Fabric 25

Cut (2) strips 2" x 8"  
Cut (2) strips 2" x 6½"

#### Light

Cut (1) rectangle 3½" x 8"

### Cutting for Entire Quilt

#### Fabric 14

Cut (2) side borders 4½" x 78", cut lengthwise  
Cut (5) strips crosswise from leftovers, each 4½" x 30",  
pieced to make the following:  
(2) top bottom borders 4½" x 66½"

#### Fabric 17

Cut (128) squares 2" for Rose Block centers

#### Fabric 25

Cut (62) strips 2" x 8" for Trellis Blocks  
Cut (62) strips 2" x 6½" for Trellis Blocks  
Cut (192) squares 2" for Rose Blocks  
Cut (64) squares 3½" for Rose Blocks

## Making the Quilt

**When making the blocks, refer to these labels and the list of fabrics on the last page of the pattern.**

**1** 1463-G    **2** 1463-L    **3** 1463-R    **4** 1464-G  
**5** 1464-L    **6** 1464-R    **7** 1465-G    **8** 1465-L  
**9** 1465-R    **10** 1466-L    **11** 1466-R    **12** 1466-T  
**\*13** 1467-G    **14** 1467-R    **\*15** 1467-T    **16** 1468-G  
**17** 1468-L    **18** 1468-R    **19** 1469-G    **20** 1469-L  
**21** 1469-R    **22** 1470-G    **23** 1470-L    **24** 1470-R  
**25** CS-10-Cream  
\*Not used in quilt

Fabric Requirements	Yardage
<b>Fabric 14</b> border	2½ yards
<b>Fabric 17</b> blocks	½ yard
<b>Fabric 25</b> border	3½ yards
<b>7 Greens</b> blocks Fabrics 3, 6, 9, 11, 18, 21, 24	fat ¼ each
<b>7 Reds</b> blocks Fabrics 3, 6, 9, 11, 18, 21, 24	fat ¼ each
<b>5 Lights</b> blocks Fabrics 5, 8, 10, 20, 23	fat ¼ each
<b>Binding (24)</b>	⅝ yard
<b>Backing (2)</b>	5½ yards

### 7 Greens From each:

Cut (10) rectangles 3½" x 5" from each of 4 Greens  
for Rose Blocks  
Cut (8) rectangles 3½" x 5" from each of 3 Greens

### 7 Reds From each:

Cut (20) squares 3½" from each of 4 Reds  
Cut (16) squares 3½" from each of 3 Reds

### 5 Lights From each:

Cut (6) rectangles 3½" x 8" from each of 4 Lights  
for Trellis Blocks  
Cut (7) rectangles 3½" x 8" from 1 Light

### Binding

Cut (8) strips 2½" x WOF for binding

### Backing

Cut (2) lengths 38" x 96", pieced to fit quilt top  
with overlap on all sides

# Winter Jewels Quilt

## Making the Quilt

**1.** Blocks are made with an easy stitch-and-flip method. Draw a diagonal line on the wrong side of 2" Fabric 25 squares. Position a marked square as shown on one corner of a Red 3½" square (Diagram 1). Stitch on the marked diagonal line. Cut away the excess fabric. Press the corner up. Repeat this step on the opposite corner with a 2" Fabric 17 square. (Diagram 2). Make 2 Petal 1 units alike for each block. Likewise, sew 2" Fabric 25 and 2" Fabric 17 squares on the other corners of a Red square as shown in the Petal 2 figure. Make 2 Petal 2 for each block.

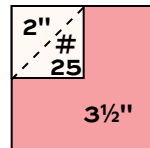


Diagram 1

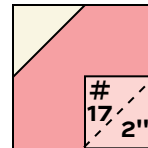
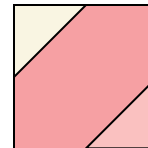
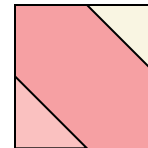


Diagram 2



Petal 1  
Make 2 for each block



Petal 2  
Make 2 for each block

**2.** The leaf units are made in the same manner. Draw a diagonal line on the wrong side of 3½" and 2" Fabric 25 squares. Position a 3½" square on the bottom of a green 3½" x 5" rectangle. Stich along the drawn line (Diagram 3). Cut away the excess fabric. Press the corner. Position and stitch a 2" Fabric 25 square on the opposite top right corner (Diagram 4), stitch, trim and press. Likewise, sew Fabric 25 squares in the other corners as shown in Leaf 2 diagram. Make 1 Leaf 1 and 1 Leaf 2 (using the same green) for each block.

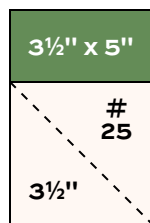


Diagram 3

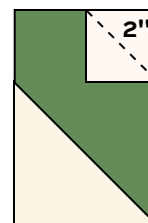
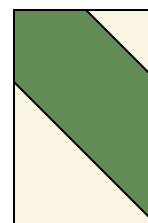


Diagram 4

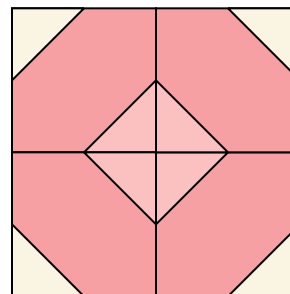


Leaf 1  
Make 1 for each block



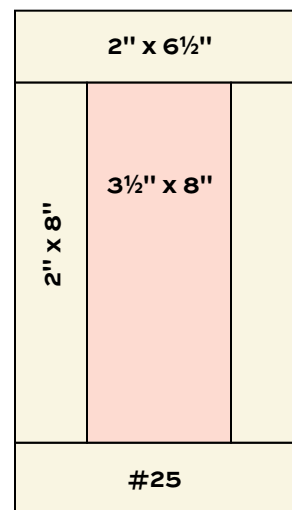
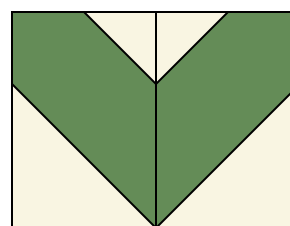
Leaf 2  
Make 1 for each block

**3.** Referring to the Rose Block, arrange and sew together 4 Petal units and 2 Leaf units as shown to make a block. Make 32 Rose Blocks.



Rose Block – Make 32

**4.** Refer to the Trellis Block diagram. Stitch Fabric 25 strips to the sides of each Light rectangle, and then to the top and bottom. Make 31 Trellis Blocks.



Trellis Block – Make 31

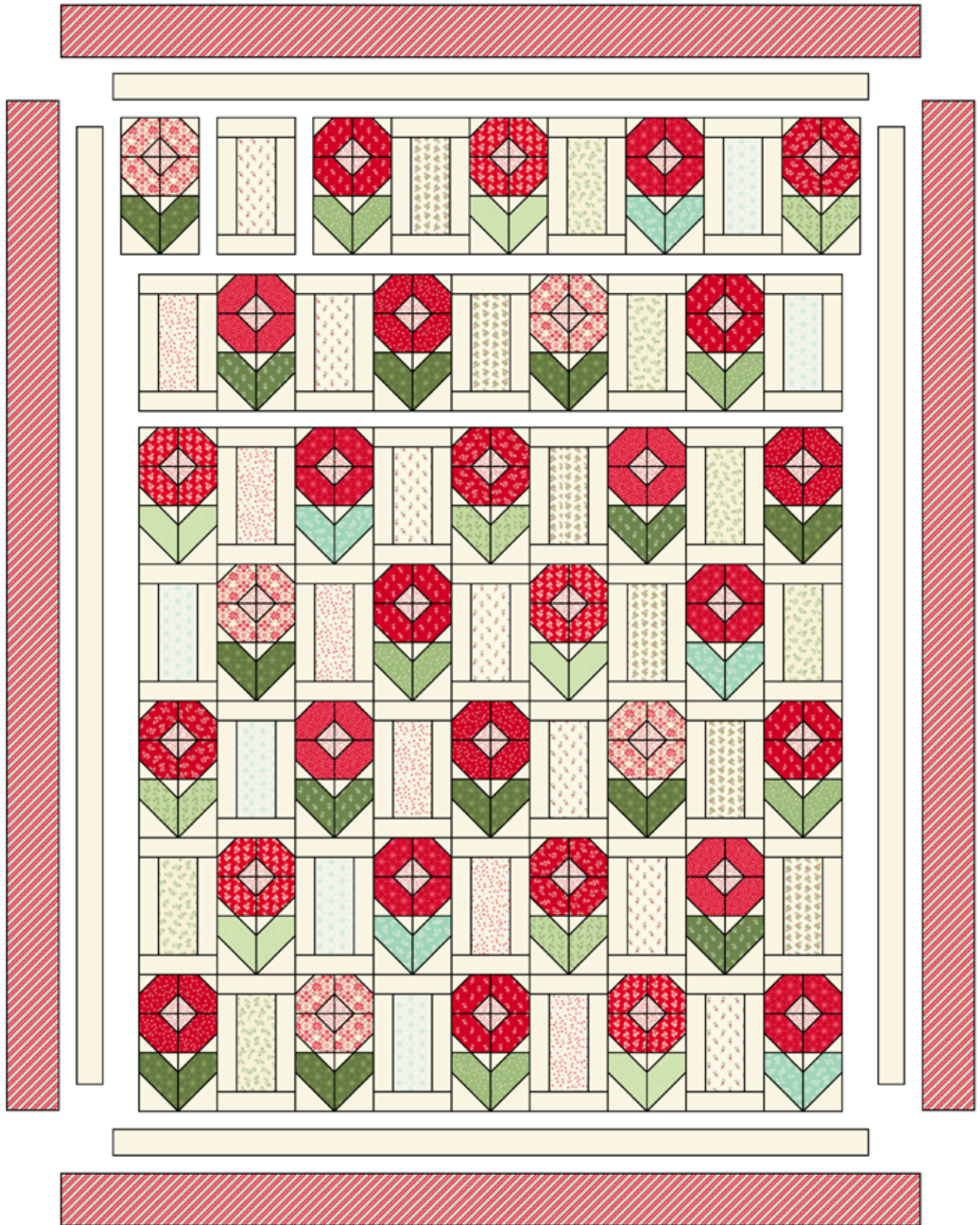
**5.** Arrange the blocks alternately on a large flat surface, making sure no fabric is close to itself. Once you are satisfied, join the blocks into 7 rows of 9 blocks each. Join the rows.

**6.** Sew long borders to the sides. Sew short borders to the top and bottom.

## Finishing the Quilt

**7.** Layer the quilt with batting and backing and baste. Quilt in the ditch around borders and patches. Bind to finish the quilt.

# Winter Jewels Quilt



Quilt Assembly

# Sugarberry ANDOVER FABRICS



1463-G



1463-L



1463-R



1464-G



1464-L



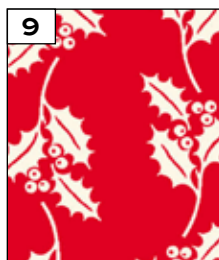
1464-R



1465-G



1465-L



1465-R



1466-L



1466-R



1466-T



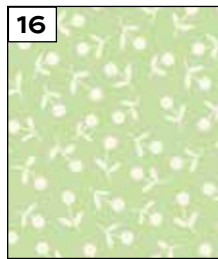
1467-G\*



1467-R



1467-T\*



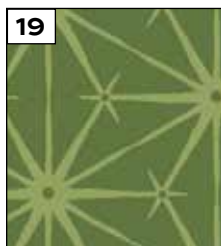
1468-G



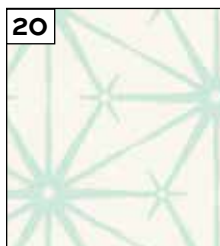
1468-L



1468-R



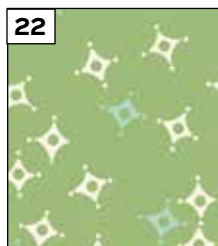
1469-G



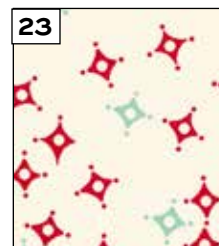
1469-L



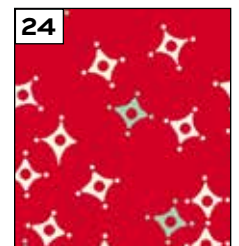
1469-R



1470-G

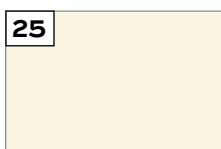


1470-L



1470-R

Additional fabric from  
Century Solids by  
Andover Fabrics



CS-10-Cream

\*Indicates fabrics not used in quilt pattern.  
Fabrics shown are 50% of actual size.

Free Pattern Download Available

1384 Broadway, 24th Floor, New York, NY 10018

Tel. (800) 223-5678 • [andoverfabrics.com](http://andoverfabrics.com)

 andover • [makower uk](http://makoweruk.com)

8/16/24